

# Vinnie

## Rectangular Table



The Vinnie brings effortless Scandinavian simplicity to your dining space. Crafted from solid ash or oak with a beautiful natural finish, its mosaic-style tabletop showcases the wood's rich grain and character, making every piece truly one of a kind.

Available in rectangular and round formats, and with a choice of fixed or extending options.

### Vinnie Rectangular Dining Table Range

#### Non Extending - With 3cm Plate

Ash		Oak	
1.6m	W: 1600 H: 740 D: 900	1.6m	W: 1600 H: 740 D: 900
1.8m	W: 1800 H: 740 D: 900	1.8m	W: 1800 H: 740 D: 900
2.0m	W: 2000 H: 740 D: 1000	2.0m	W: 2000 H: 740 D: 1000
2.2m	W: 2200 H: 740 D: 1000	2.2m	W: 2200 H: 740 D: 1000
2.4m	W: 2400 H: 740 D: 1000	2.4m	W: 2400 H: 740 D: 1000

#### Extending - With 3cm Plate

Ash		Oak	
1.6m	W: 1600 H: 740 D: 900	1.6m	W: 1600 H: 740 D: 900
1.8m	W: 1800 H: 740 D: 900	1.8m	W: 1800 H: 740 D: 900
2.0m	W: 2000 H: 740 D: 900	2.0m	W: 2000 H: 740 D: 900
2.2m	W: 2200 H: 740 D: 1000	2.2m	W: 2200 H: 740 D: 1000
2.4m	W: 2400 H: 740 D: 1000	2.4m	W: 2400 H: 740 D: 1000

1.6 & 1.8 - Prepared for 1 leaf  
2.0, 2.2, 2.4 - Prepared for 2 leaves

#### Leaves - For Extending Tables

Ash		Oak	
50x90	W: 500 H: 30 D: 900	50x90	W: 500 H: 30 D: 900
50x100	W: 500 H: 30 D: 1000	50x100	W: 500 H: 30 D: 900

No storage and only 1 extension leaf on 1.6m & 1.8m tables

#### Edge Profiles



Edge Profile 3  
Pisa Rounded



Edge Profile 4  
Straight



Edge Profile 6  
Wing

#### Colour Options



Ash C3 / Oak C3  
Lacquered  
C3 are only made for products without patination.



Ash C4 / Oak C4  
Natural Oiled



Ash C6 / Oak C6  
White Oiled



Ash C8 / Oak C8  
Soaped



Ash C11 / Oak C11  
Dark Grey Oiled



Ash C12 / Oak C12  
Antique Brown Oiled



Ash C13 / Oak C13  
Light Grey Oiled



Ash C14 / Oak C14  
Black Stained & Oiled  
Color C14 is a black stain with oil on top, which requires careful and frequent oiling. If this is not adhered to, there is a risk that the black underlying stain will rub off.



Ash C15 / Oak C15  
Mocca Brown Oiled



Ash C16  
Warm White Oiled  
C16 is only for ash



Ash C20 / Oak C20  
Grey Brown Oiled



Ash C44 / Oak C44  
Black Matt Lacquered  
C44 is only for plates and can only be made for products without patination.

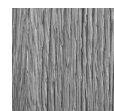
#### Wood Finish



UP  
Without Patination



SC  
Soft Cracks



RL  
Raw Look



FK  
Filled Knots  
Only for OAK!



Castle  
Davitt  
furniture



Must be given a suitable surface treatment before use. Treatment oil to be purchased with each table and treated 1-3 times a year depending on how much wear and dry air your furniture is exposed to.

scan me to view  
the range



# Vinnie Round Table

The Vinnie brings effortless Scandinavian simplicity to your dining space. Crafted from solid ash or oak with a beautiful natural finish, its mosaic-style tabletop showcases the wood's rich grain and character, making every piece truly one of a kind.

Available in rectangular and round formats, and with a choice of fixed or extending options.

## Vinnie Round Dining Table Range

Non Extending - With 3cm Plate				Extending - With 3cm Plate			
Ash		Oak		Ash		Oak	
1.1m	W: 1100 H: 740 D: 1100	1.1m	W: 1100 H: 740 D: 1100	1.1m	W: 1100 H: 740 D: 1100	1.1m	W: 1100 H: 740 D: 1100
1.2m	W: 1200 H: 740 D: 1200	1.2m	W: 1200 H: 740 D: 1200	1.2m	W: 1200 H: 740 D: 1200	1.2m	W: 1200 H: 740 D: 1200
1.3m	W: 1300 H: 740 D: 1300	1.3m	W: 1300 H: 740 D: 1300	1.3m	W: 1300 H: 740 D: 1300	1.3m	W: 1300 H: 740 D: 1300
1.4m	W: 1400 H: 740 D: 1400	1.4m	W: 1400 H: 740 D: 1400	1.4m	W: 1400 H: 740 D: 1400	1.4m	W: 1400 H: 740 D: 1400
1.5m	W: 1500 H: 740 D: 1500	1.5m	W: 1500 H: 740 D: 1500	1.5m	W: 1500 H: 740 D: 1500	1.5m	W: 1500 H: 740 D: 1500
1.6m	W: 1600 H: 740 D: 1600	1.6m	W: 1600 H: 740 D: 1600	1.6m	W: 1600 H: 740 D: 1600	1.6m	W: 1600 H: 740 D: 1600

### Leaves - For Extending Tables

Ash		Oak	
50x110	W: 500 H: 30 D: 1100	50x110	W: 500 H: 30 D: 1100
50x120	W: 500 H: 30 D: 1200	50x120	W: 500 H: 30 D: 1200
50x130	W: 500 H: 30 D: 1300	50x130	W: 500 H: 30 D: 1300
50x140	W: 500 H: 30 D: 1400	50x140	W: 500 H: 30 D: 1400
50x150	W: 500 H: 30 D: 1500	50x150	W: 500 H: 30 D: 1500
50x160	W: 500 H: 30 D: 1600	50x160	W: 500 H: 30 D: 1600

No support leg and only 1 extension leaf on 1.1m table

1.1 & 1.2 - Prepared for 1 leaf  
1.3, 1.4, 1.5, 1.6 - Prepared for 2 leaves

### Edge Profiles



Edge Profile 3  
Pisa Rounded



Edge Profile 4  
Straight



Edge Profile 6  
Wing

### Colour Options



Ash C3 / Oak C3  
Lacquered  
C3 are only made for products without patination.



Ash C4 / Oak C4  
Natural Oiled



Ash C6 / Oak C6  
White Oiled



Ash C8 / Oak C8  
Soaped



Ash C11 / Oak C11  
Dark Grey Oiled



Ash C12 / Oak C12  
Antique Brown Oiled



Ash C13 / Oak C13  
Light Grey Oiled



Ash C14 / Oak C14  
Black Stained & Oiled  
Color C14 is a black stain with oil on top, which requires careful and frequent oiling. If this is not adhered to, there is a risk that the black underlying stain will rub off.



Ash C15 / Oak C15  
Mocca Brown Oiled



Ash C16  
Warm White Oiled  
C16 is only for ash



Ash C20 / Oak C20  
Grey Brown Oiled



Ash C44 / Oak C44  
Black Matt Lacquered  
C44 is only for plates and can only be made for products without patination.

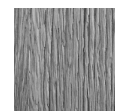
### Wood Finish



UP  
Without Patination



SC  
Soft Cracks

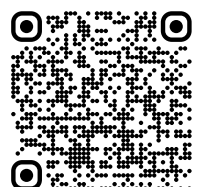


RL  
Raw Look



FK  
Filled Knots  
Only for OAK!

scan me to view the range



Castle  
Davitt  
furniture



Must be given a suitable surface treatment before use. Treatment oil to be purchased with each table and treated 1-3 times a year depending on how much wear and dry air your furniture is exposed to.